

Instruction Manual

Universal CarPlay/Android Auto Adapter **Beta** with RCA and HDMI output

In order to protect the driving safety and avoid break the traffic law; please DO NOT operate the product while driving.

The reversing surveillance function just is used in reversing assistance. Please check the entire surroundings while reversing.

All steps of installation should be done by the well-trained specialist.

During installation, the ignition key should be taken off and after all installation finished, connect power cable last.

Please DO NOT plug or pull the connected cables in the state of power-on, in order to avoid damaged monitor or accessory.

Install wiring in a manner in which cables will not come in contact with metal parts. The wiring may be damaged by contact with

metal parts, resulting in fire and shocks. Avoid all contact with hot surfaces when wiring the main unit. High temperatures may

damage wiring, causing shorts, arcing and fires.

Please DO NOT put the product in the damp environment or water, in order to avoid electric shock, damaged and fire accident caused by a short circuit.

Kindly check all components are in the box when receiving the product. If anything missing, inform to the supplier/manufacturer.

Start the engine before loading, check the interface whether have function displayed, key control whether correct, the vehicle

interface whether having a scratch. Please give the feedback to the supplier/manufacturer if there have any questions.

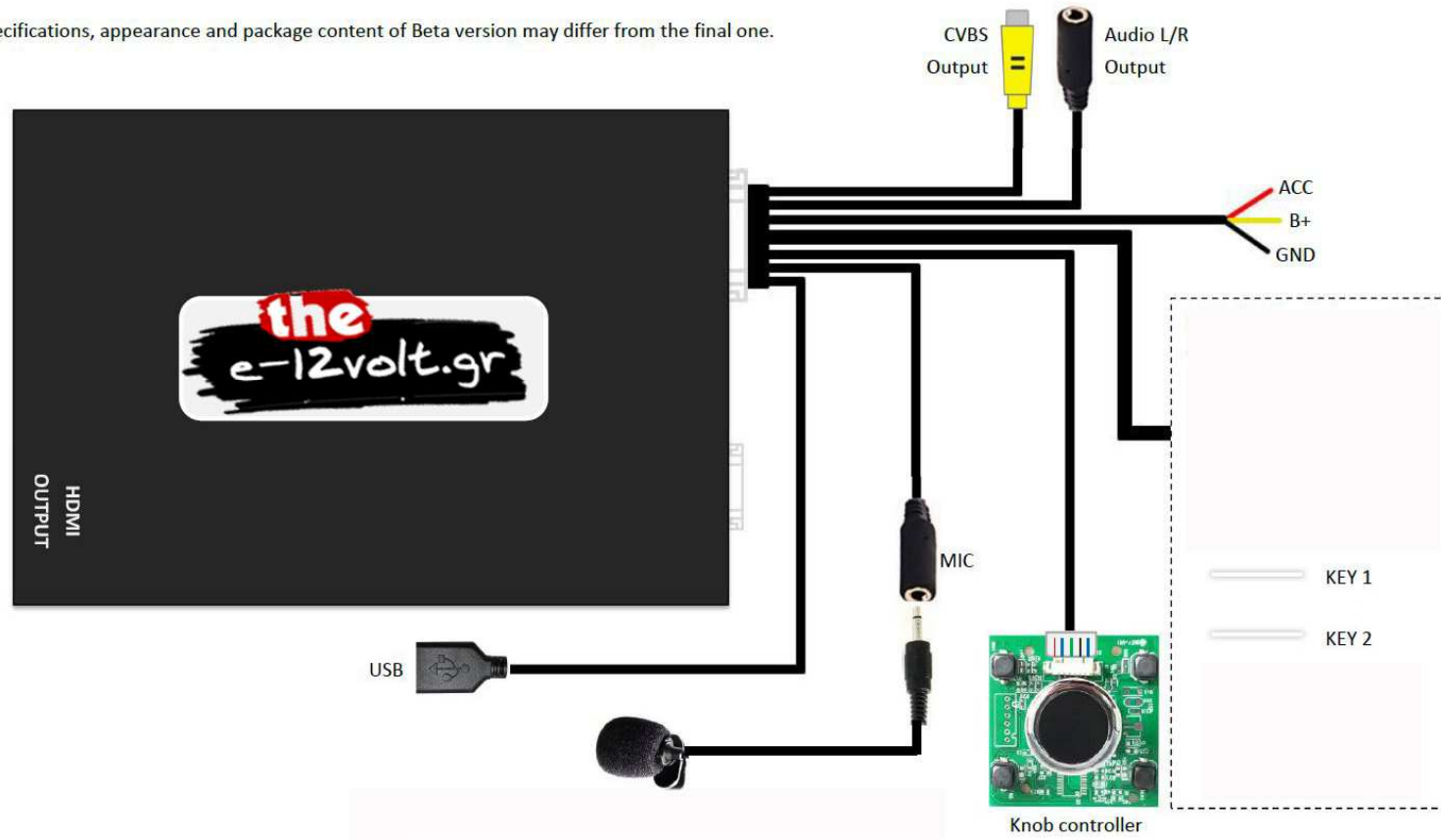
Please note that put the disassembled automotive components in a good way on the installation process, avoid scratching the instrument panel, the leftovers of connecting cables need to handle and DO NOT leave it in the car. The connecting plug must be insulated in order to short circuit. The cables should be connected in a good way; the vehicle installation space is a little small, so reduce space usage as far as possible. There should be a good plan about connect cables, avoid affecting the active component of connecting, such as control components of turning the steering wheel, throttle and brake pedal. There need to be fastened after connecting cables in case of a drop.

Features:

- Integrated 2 in 1 module supports Apple CarPlay, Android Auto
- Supports USB HD video (up to 1080P) and lossless music (APE, WAV, FLAC, MP3, WMA, etc.) playback
- CVBS and HDMI (720P) output
- Automatic enable CarPlay/Android Auto when plugging in an iPhone/Android phone
- Integrate Bluetooth for phone calling audio delivering on Android Auto
- High performance audio output and support control sound volume, EQ setting
- Provide external knob controller for operation
- Smartphone charging
- Further software update via USB

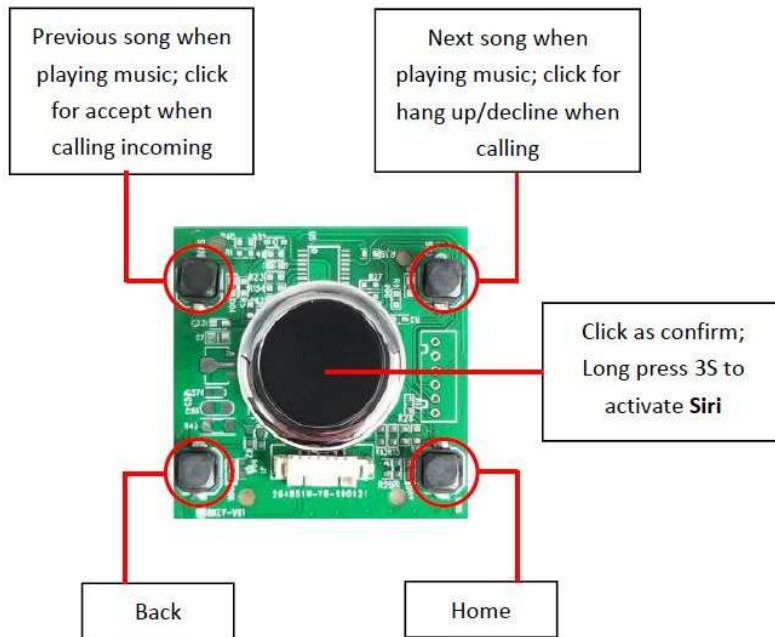
Connection Diagram:

NOTE! Product specifications, appearance and package content of Beta version may differ from the final one.



CarPlay

NOTE! Please disconnect iPhone Bluetooth when using CarPlay



Android Auto

NOTE! Make sure smartphone connect to this adapter's Bluetooth for phone call audio delivering when using Android Auto.

