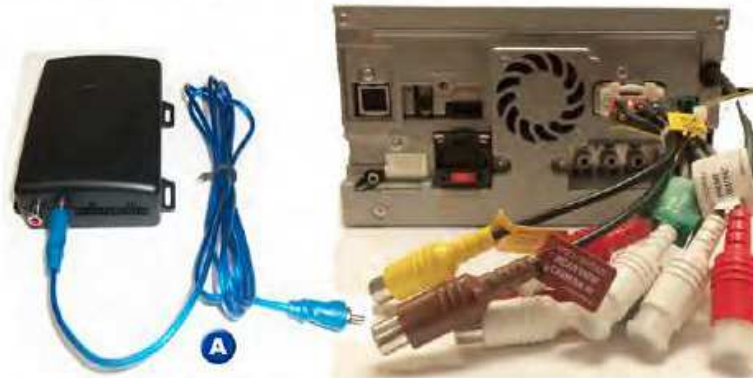


1 Remove head unit from vehicle.



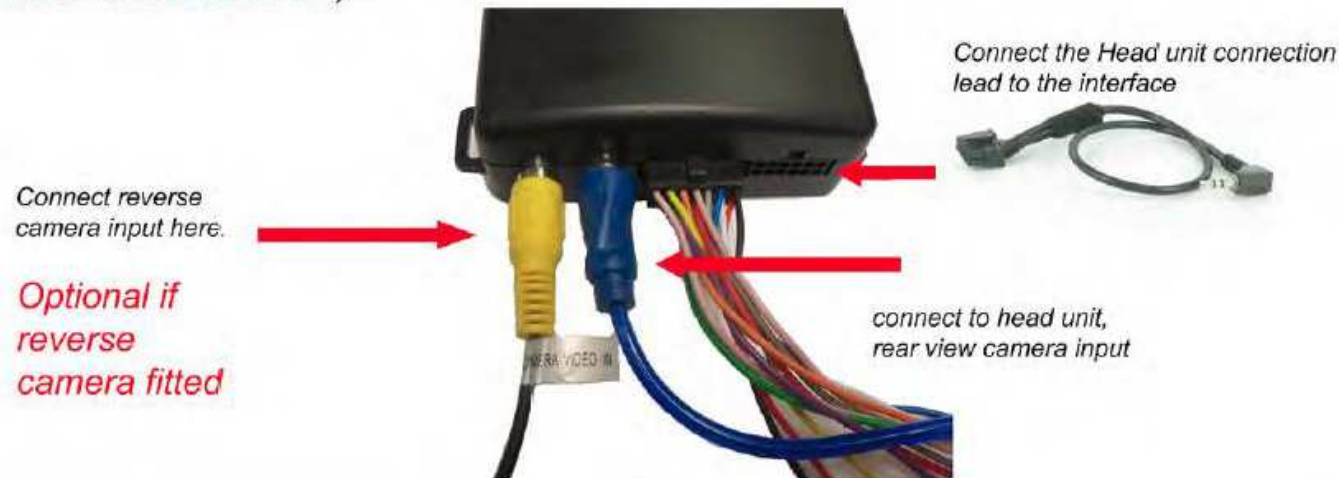
2 Connect the interface to the head unit, connecting cable A to the rear view camera input, on the head unit.



3 Connect the head unit connection lead as shown.



4 Connect the Rear View Camera input to the interface as indicated (Optional if reverse camera fitted).



Once the unit is fitted please configure the steering wheel, by following the instructions on the next page.





- 1 = Seek Up
- 2 = Seek Down
- 3 = Mode Button

1. Press & hold **Mode button (3)** until menu Option is displayed.

2. Pressing **Seek up/down (buttons 1/2)** will adjust the Settings.

3. Pressing the **mode button** again will select the next menu option.

note:
there only 3 menu options are available.



Menu Configuration Option

Press and hold the Mode and seek + button together till the menu is displayed. Now release the mode button and hold the seek + button for a further 5 sec's, this will reveal menu options. By pressing button 1/2 it will adjust the setting and the mode button will select the next option.



1
2
3

- 1 = Seek Up
- 2 = Seek Down
- 3 = Mode Button



Note : Old SWC are vehicles pre 2010
New SWC are vehicles post 2010



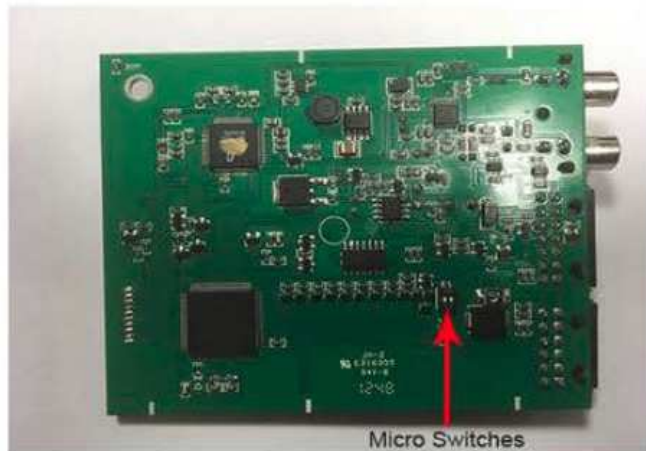
Remove the vehicle harness from the Connects2 harness and disconnect the interface box

Remove Screw



Remove label and open up the case of the interface

When case is open remove the PCB Board and flip the board over to show the other side of the board



Set both the Micro switches to OFF from ON

Reassemble the interface and reconnect